



## Westminster Green, SW1

Guide Price £1,100,000

**Third floor apartment | Large reception / dining room | Fitted modern kitchen | Spacious hallway | Master bedroom with en-suite shower room | Two further bedrooms | Guest Bathroom | Gym | 24-hour concierge | Resident meeting rooms**

A beautifully presented third floor apartment located in the popular Westminster Green development with exceptional high ceilings and a secluded balcony with access from all three bedrooms.

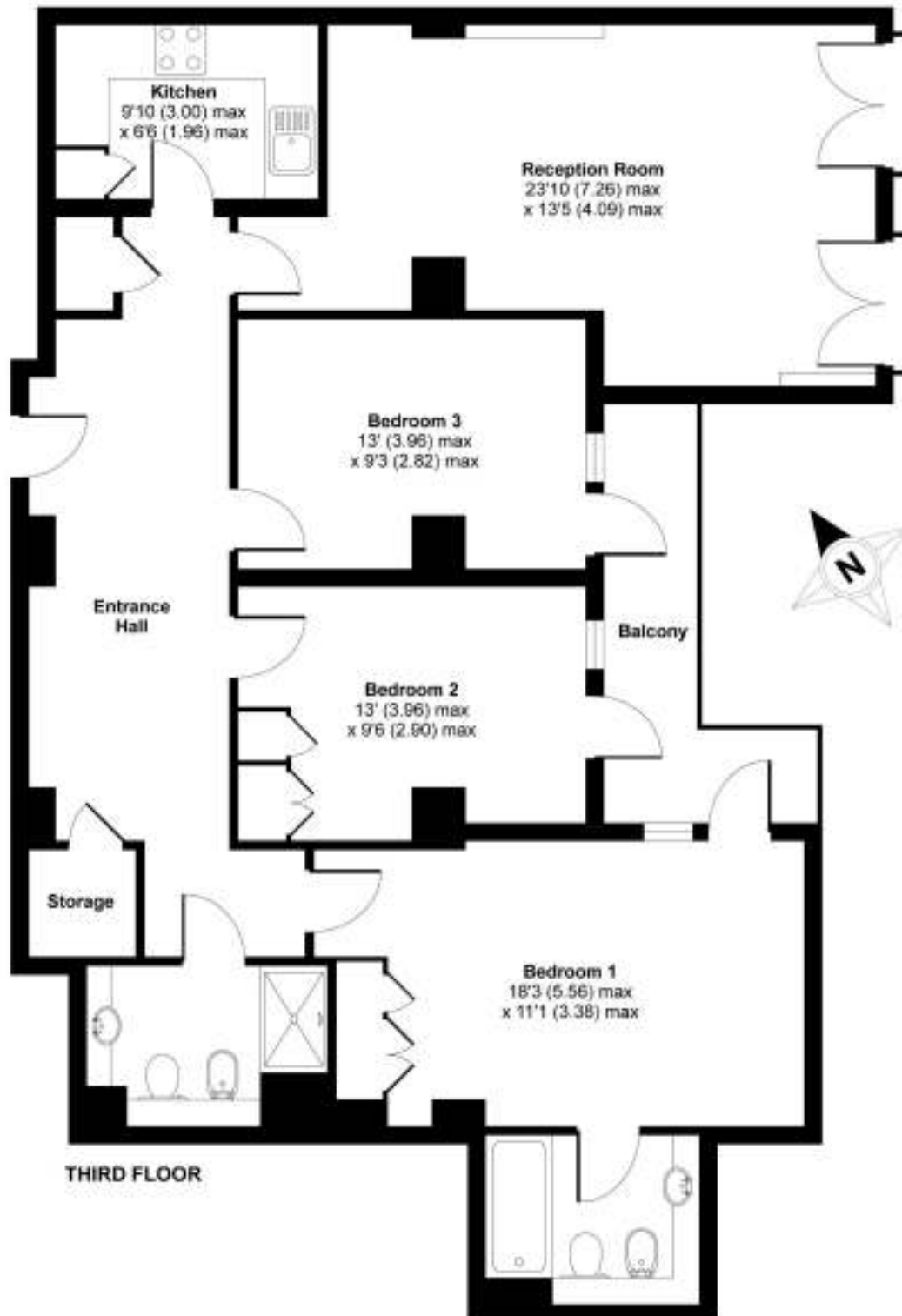
The accommodation is well laid out, set off of a wide hallway creating a feeling of space. The reception / dining room, neighbouring the kitchen, provides an excellent entertaining space with floor to ceiling windows and Juliette balconies. The master bedroom is a grand room with an en suite bathroom and built in wardrobes. There are two further double bedrooms sharing a second bathroom. All three bedrooms have floor to ceiling glazed doors with access to the balcony.

### Location

Westminster Green is a fashionable development located in the heart of Westminster with 24 hour concierge, gym and resident meeting rooms. It is walking distance to some of the key attractions of London such as the Houses of Parliament, St James Park, Tate Britain and the South Bank as well as the shops and restaurants of Victoria, Pimlico and Mayfair. Westminster, Victoria and Pimlico Underground stations are only minutes away.

# Westminster Green, London SW1

APPROX. GROSS INTERNAL FLOOR AREA 1117 SQFT / 103.7 SQM



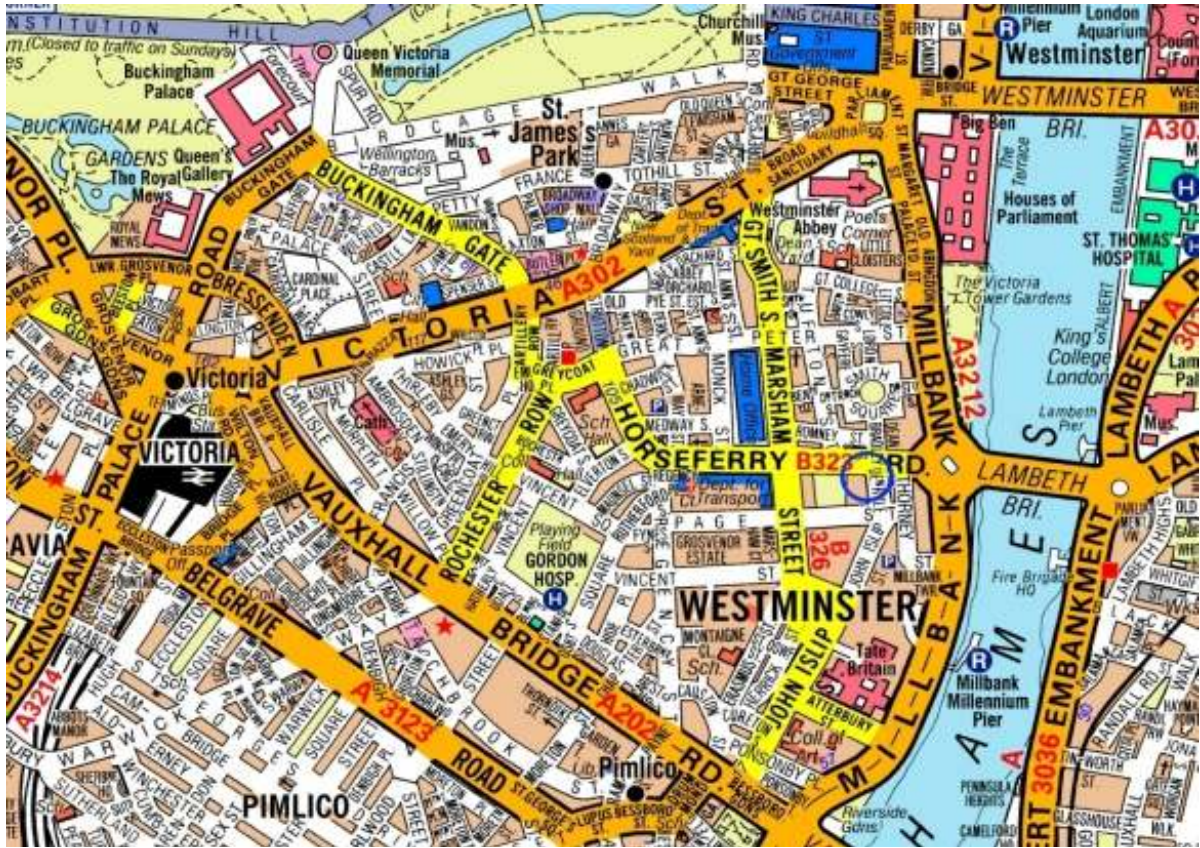
Whilst every attempt has been made to ensure the accuracy of the floor plans contained here, measurements of doors, windows and rooms are approximate and no responsibility is taken for any error, omission or mis-statement. These plans are for representation purposes only as defined by RICS Code of Measuring Practice and should be used as such by any prospective purchaser. The services, systems and appliances listed in this specification have not been tested by Daniel Cobb and no guarantee as to their operating ability or their efficiency can be given.



Westminster Green Entrance



Westminster Green Foyer



## Terms

Tenure	Leasehold 999 years from 2005
Borough	City of Westminster
Service Charges	TBC
Ground Rent	Peppercorn

## Call our office now for free independent mortgage advice

Viewing is strictly by appointment only

## Important Notice

1. These Particulars are prepared for the guidance only of prospective purchasers. They are intended to give a fair overall description of the property, but are not intended to constitute, part of an offer or contract.
2. Nothing in these particulars shall be deemed to be a statement that the property is in good structural condition or otherwise, nor that any services, appliances, equipment or facilities are in good working order. Purchasers should satisfy themselves on such matters prior to purchase.
3. Any areas, measurements or distances referred to are given as a guide only and are not precise. If such details are fundamental to a purchase, purchasers must rely on their own inquiries or those, which can be performed by their appointed advisers.
4. The photographs appearing in these particulars show only certain parts and aspects of the property at a time when the photographs were taken and that certain aspects may have changed since then. It should not be assumed that any contents, furnishings, furniture, etc. photographed are included in the sale. No assumptions should be made with regard to parts of the property that have not been photographed.
5. Where any reference is made to planning permissions or potential uses, such information is given by Daniel Cobb in good faith. Purchasers should however make their own inquiries into such matters prior to purchase. Descriptions of the property contained herein are subjective and not a statement of fact.
6. The information in these particulars is given without responsibility on the part of Daniel Cobb or their clients. Neither Daniel Cobb nor their employees has any authority to make or give any representations or warranty whatever in relation to this property.